



产品规格承认书

SPECIFICATION FOR APPROVAL

供应商:

SUPPLIER: 广州雅睿普电子有限公司

电话:

TEL: (020) 85559690 85559620

传真:

FAX: (020) 85521130

地址: 广州市番禺区兴业大道江南工业一区二
横路 13 号

ADDRESS: No.13,2rd transverse street,1st Jiangnan
industry park,Xingye road,Nancun town,
Panyu district,Guangzhou city,China.

客户名称:

CUSTOMER: _____

产品名称:

PRODUCT NAME: POWER SUPPLY

规格型号:

MODEL DETAIL: EPM-S150D5+12

供方签章:

SUPPLIER:

需方签章:

CUSTOMER:

日期:

DATE:

日期:

DATE:

说明 explain:

备注: 承认签章后请回复一份承认书(或复印件)给我司, 其余由贵司留作存盘。如果在签章的承认书(或复印件)回复我司之前, 下了有关此零件的订单且又无特别说明, 那么我司就确定贵司已完全承认了。

Please return one specification or one copy of it with your chop and signature of approval and retain the others for your record. In the event of an order being placed for this part number before the chop and signed with specification (or copy) is returned and without special explanation, it will be assumed that full approval have been given.

MODEL : EPM-S150D5+12

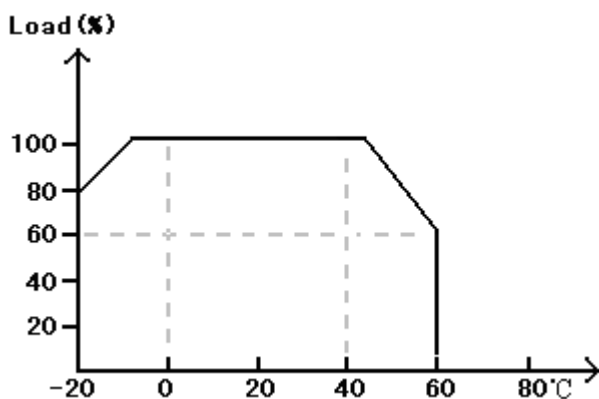
Features:

- AC input range selectable by switch
- Compact size
- Protections: SCP /OCP/ OVP
- High efficiency, high reliability
- 100% full load burn-in test
- 1 years warranty



net weight: 670g

Temperature- load curve



SPECIFICATION:

输入 INPUT	电压 (VOLTAGE)	100~120VAC 176~240VAC
	启动电压 (START VOLTAGE)	90VAC 160VAC
	频率 (FREQUENCY)	47~63Hz
	最大输入电流 (I max)	2.0A; 1.2A

	启动冲击电流 (INRUSH CURRENT)	<40A 冷态启动 220V IN (COLD START)	
	功率因数 (POWER FACTOR)	>0.6	
输出 OUTPUT	电压 (V) (OUT VOLTAGE)	CH ₁	CH ₂
		5V	12V
	电流 (A) (CURRENT)	10A	8.2A
	电压调整率(%) (LINE REGULATION)	0.2%	0.1%
	电流调整率(%) (LOAD REGULATION)	0.4%	+5%, -11%
	纹波(0~20MHz) (RIPPLE P-P)	20mV	30mV
	输出功率 (OUT POWER)	98W	
	效率 (EFFICIENCY)	80%	
	电压调整范围 (VOLTAGE ADJ)	4.5V~5.8V	
	启动时间 (START TIME)	500mS	I=100%
	保持时间 (HOLD TIME)	50mS	I=100%
保护功能 PROTECTION	过流保护 (O.C.P)	>120%	
	过压保护 (O.V.P)	>120%	
	欠压保护 (L.V.P)	<80%	
	短路保护 (SHORT)	hiccup	
绝缘强度 ISOLATION	输入——输出 (INPUT-OUTPUT)	3KVAC/min	
	输入——地 (INPUT-FG)	1.5KVAC/min	
	输出——地 (OUTPUT-FG)	0.5KVAC/min	
绝缘阻抗 ISO RESISTANCE	输入——输出 (INPUT-OUTPUT)	>50MΩ /500VDC	
	输入——地 (INPUT-FG)	>50MΩ /500VDC	
	输出——地 (OUTPUT-FG)	>50MΩ /500VDC	
漏电流 (LEAKAGECURRENT)		<0.5mA@230VAC	
接地电阻 (EARTH RESISTANCE)	FG→距离 FG 最远端外壳	22mΩ±10%@25A	
安全标准 (SAFETY)		EN60950 GB4943 UL60950	
谐波		GB17625.1 CLASS D	
电磁兼容 EMC	电磁干扰 (EMI)	传导干扰 (EMI)	FCC.PART15.CLASS B EN55022 CLASS B
		辐射干扰 (EMI)	FCC.PART15.CLASS B EN55022 CLASS B
	电磁抗扰 (EMS)	快速脉冲群 (EFT)	GB/T 17626.4 LEVEL3 EN61000-4-4 LEVEL3
		雷击 (SURGE)	GB/T 17626.5 LEVEL3 EN61000-4-5 LEVEL3
环境 ENVIRONMENT	工作环境 (WORKING TEMP)	0~45℃ 100%LOAD >45℃ 60%LOAD	
	储存温度 (STORE TEMP)	-20℃~85℃	
电源温升 TEMP RISE	满载输出、温升低于多少	<K80	
结构尺寸 SIZE	长×宽×高 (L*W*H)	198mm*98mm*39mm	

EMC DATA:

1、 EMI

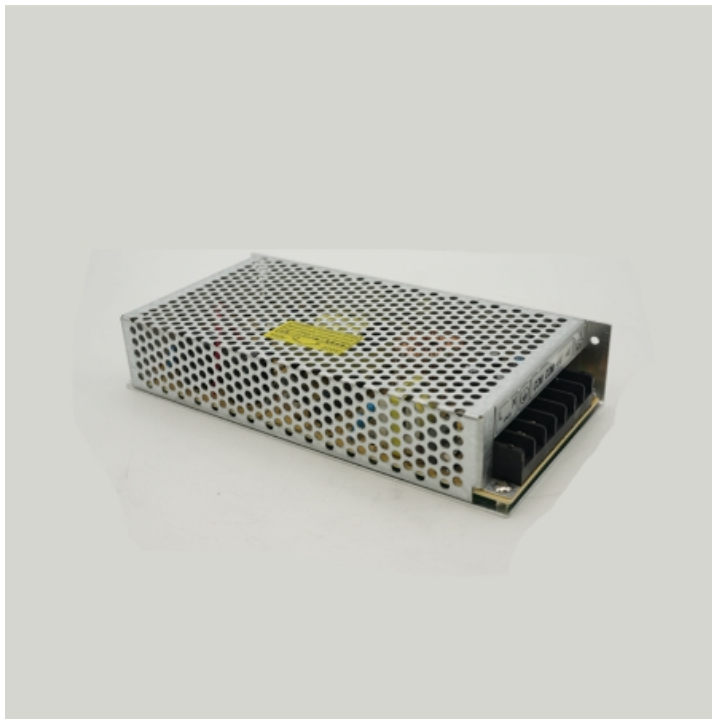
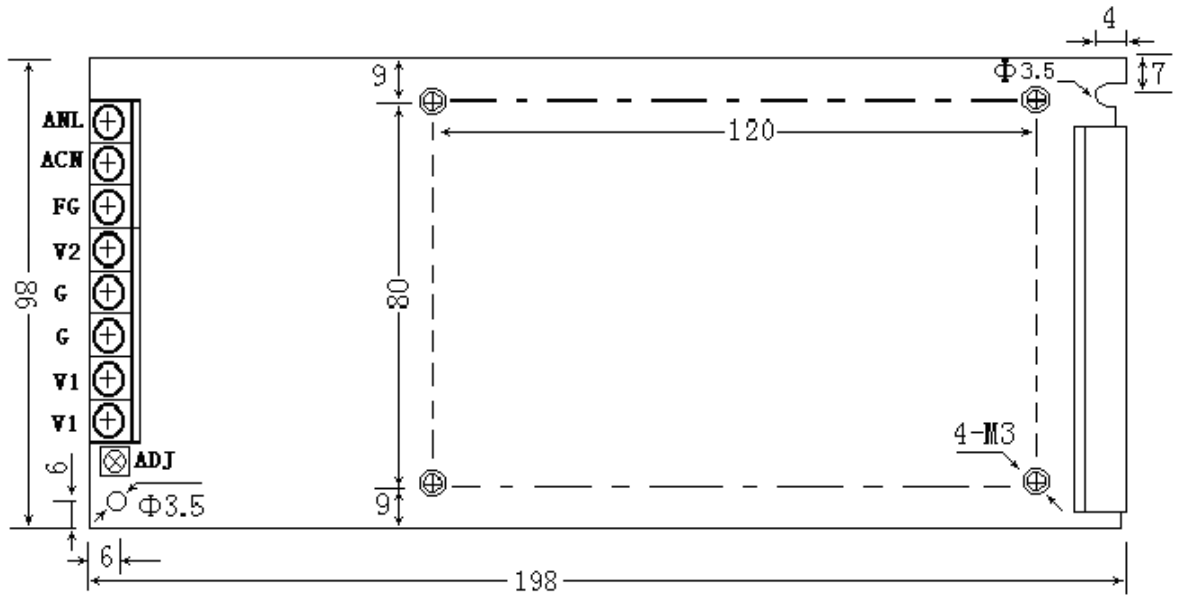
RE/CE	EN55022 CLASS A
Harmonics Current	EN61000-3-2

2、 EMS

ESD	EN61000-4-2	Air:8KV Contact:4KV	Criteria A
RS	EN61000-4-3	80MHz~1GHz 3V/m	Criteria A
EFT	EN61000-4-4	5KHz AC=1KV	Criteria A
Surge Test	EN61000-4-5	1.2/50us AC: ±2KV 8/50us	Criteria A
CS	EN61000-4-6	0.15MHz-80MHz 3V/m	Criteria A
Voltage dips	EN61000-4-8	30% 10ms 60% 100ms >95% 5000ms	Criteria A
Power Frequency Magnetic Field	EN61000-4-11	50Hz 30A/m	Criteria A
RF Electromagnetic Field pulse modulated	ENV50204	900±5MHz 200Hz 3V/m, 50%Duty cycle	Criteria A

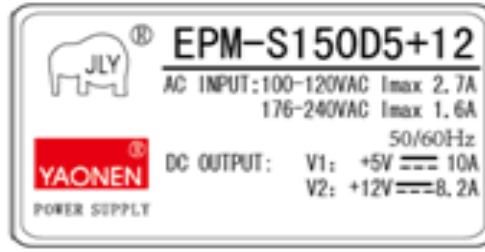
build in dimension

unit: mm

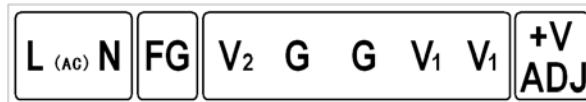


MODEL: EPM-S150D5+12

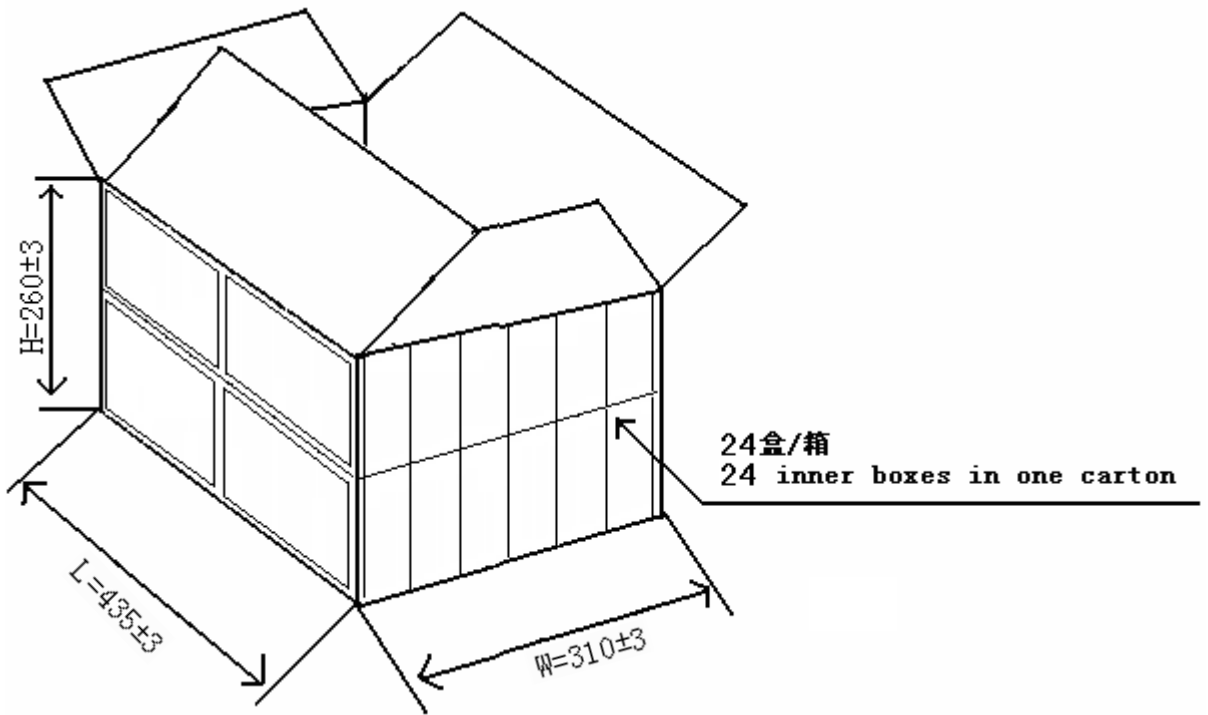
Spec Label



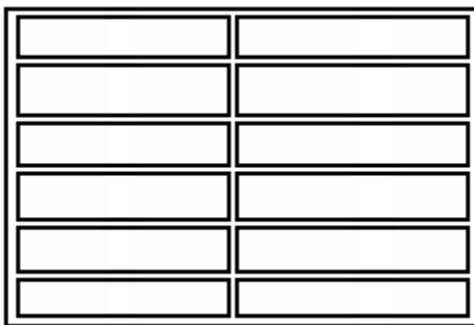
Connector define



Packing unit: mm



Inner Box plane



solid

